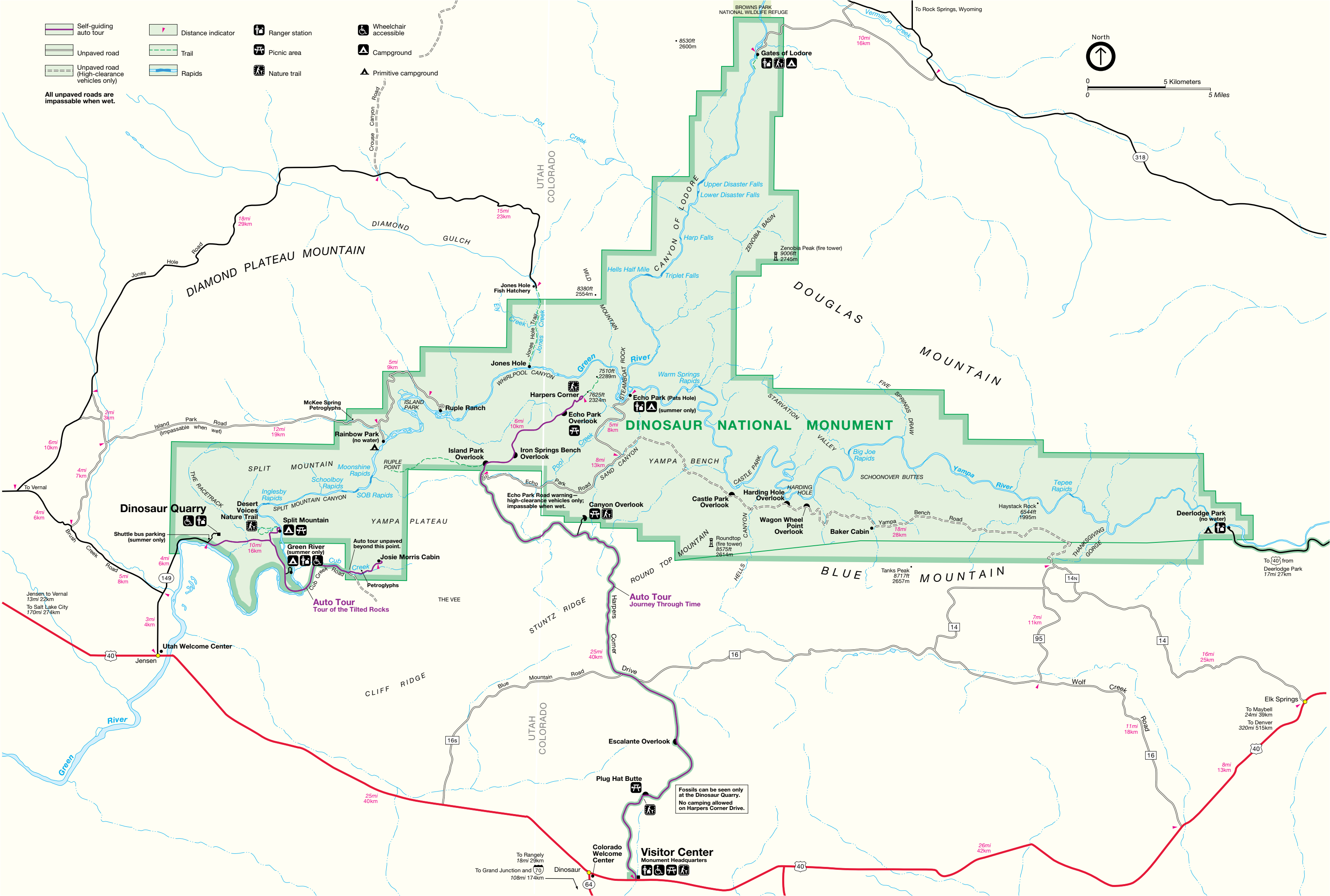


- Self-guiding auto tour
- Unpaved road
- Unpaved road (High-clearance vehicles only)
- Distance indicator
- Trail
- Rapids
- Ranger station
- Picnic area
- Nature trail
- Wheelchair accessible
- Campground
- Primitive campground

All unpaved roads are impassable when wet.

North

0 5 Kilometers
0 5 Miles



Fossils can be seen only at the Dinosaur Quarry. No camping allowed on Harpers Corner Drive.

Visitor Center
Monument Headquarters

Jensen to Vernal
13mi 22km
To Salt Lake City
170mi 274km

Elk Springs
To Maybell
24mi 39km
To Denver
320mi 515km

To Rangely
18mi 29km
To Grand Junction and
108mi 174km

To 40 from
Deerledge Park
17mi 27km